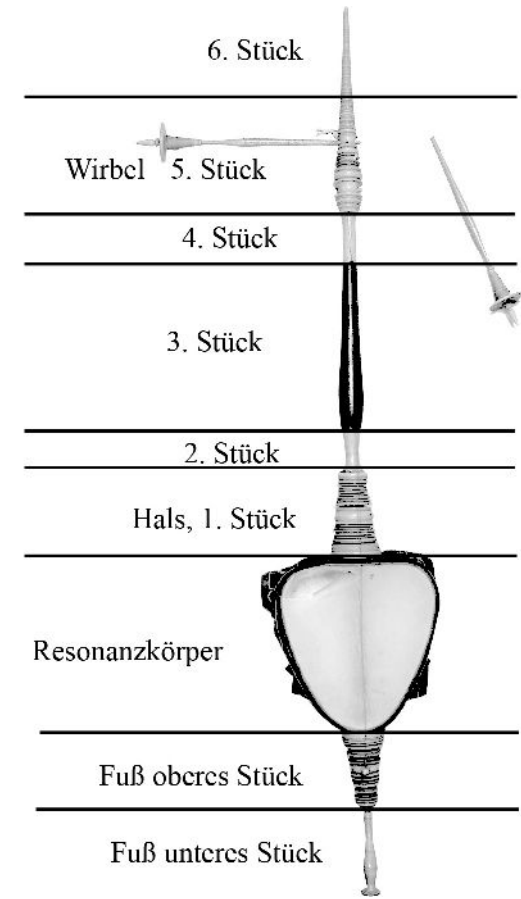


The conservation of a music-instrument from Java by Margherita Minuzzi January 2006



Structure of the Rebab

- String-instrument of javanian origin
- Two strings
- Wooden body
- Membrane of bovine intestine or bovine bladder
- Stilted wooden stick through body
- Stilted foot
- Stilted whirls
- Bridge sitting on membrane



Structure of the Rebab

- String-instrument of javanian origin
- Two strings
- Wooden body
- Membrane of bovine intestine or bovine bladder
- Stilted wooden stick through body
- Stilted foot
- Stilted whirls
- Bridge sitting on membrane



Damages of the rebab



Tear in the membrane

Damages of the rebab



Loose ribbon on textile decoration

Damages of the rebab



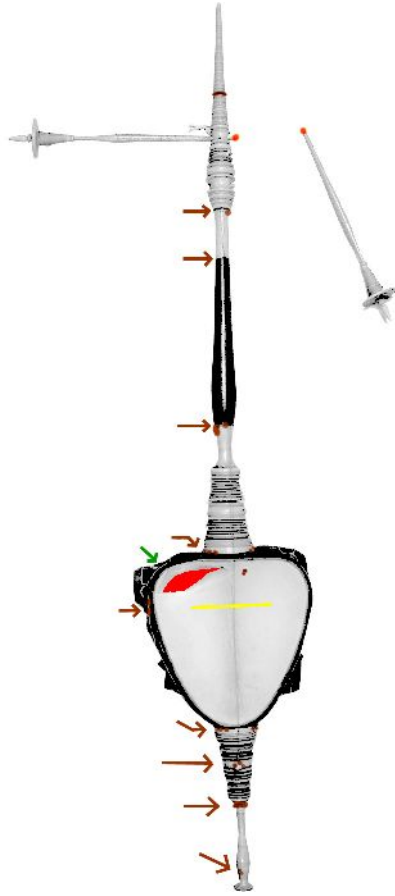
Broken whirl







Aims of conservation

- No complete restoration for use as an instrument
- No reconstruction of the bridge that would cause further damage
- Set the object in a safe state, to make exhibitions and transport possible

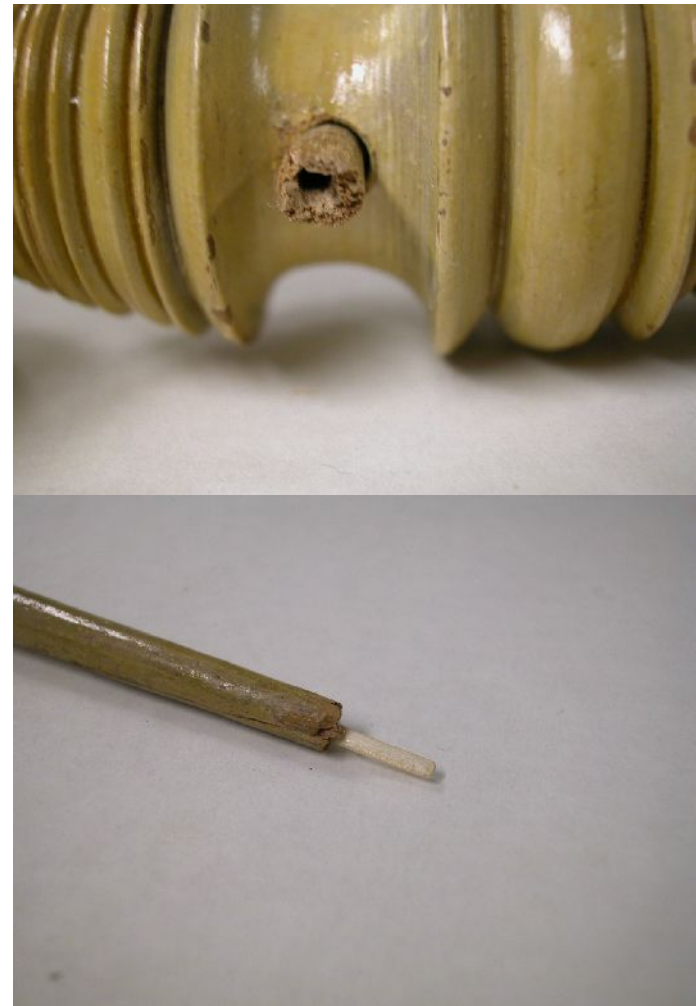
Aims of conservation



-  Repair broken whirl
-  Remove brown spots
-  Re-attach loose ribbon
-  Close the tear in membrane

Repairing the whirl

- Little end stuck in the whirl-hole
- Dowel of coniferous wood, reaching 1 cm into each part



Repairing the whirl

- Glued together with hide-glue
- Crack cemented with Microballons and hide-glue
- Retouche with pastelcolours under a layer of hide-glue



Safing the loose ribbon



Before (left) and after restoration (right):

The Ribbon was sewed using the old needleholes if possible

Closing the tear



- Material reacts strongly on humidity
- Closing tear by glueing patches of parchment to underside
- Last hole: pulled in right position with thong (red)

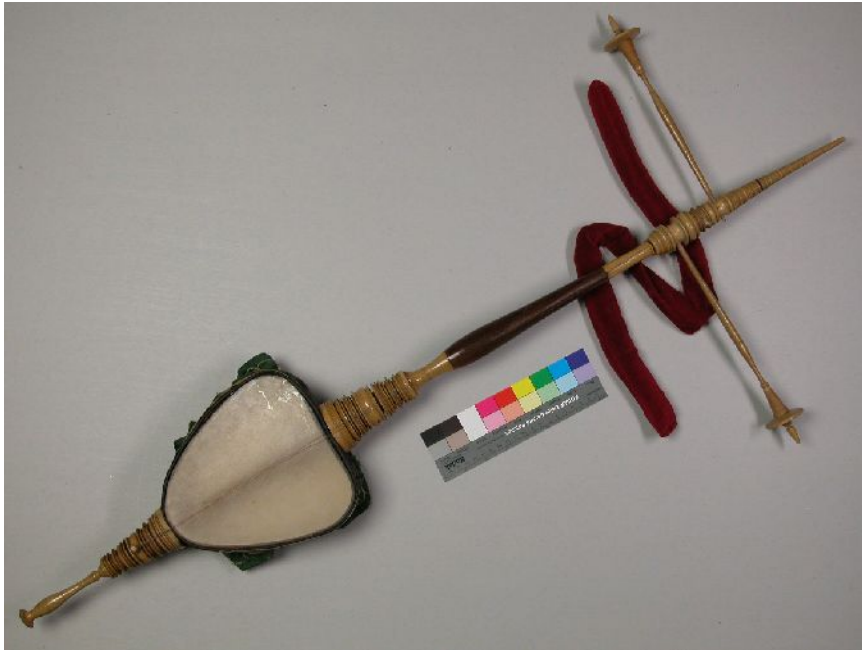
Closing the tear



Membrane after closing the tear (under different illuminations)

Storage recommendations

- Stable climate is very important!
- Humidity should be rather high (not below 55 %) to save the membrane
- Bridge should not be jammed under tight strings
- Whirl should be supported in the long run



The conservation of a
javanian instrument
by Margherita Minuzzi
January 2006

Thank you for your attention!